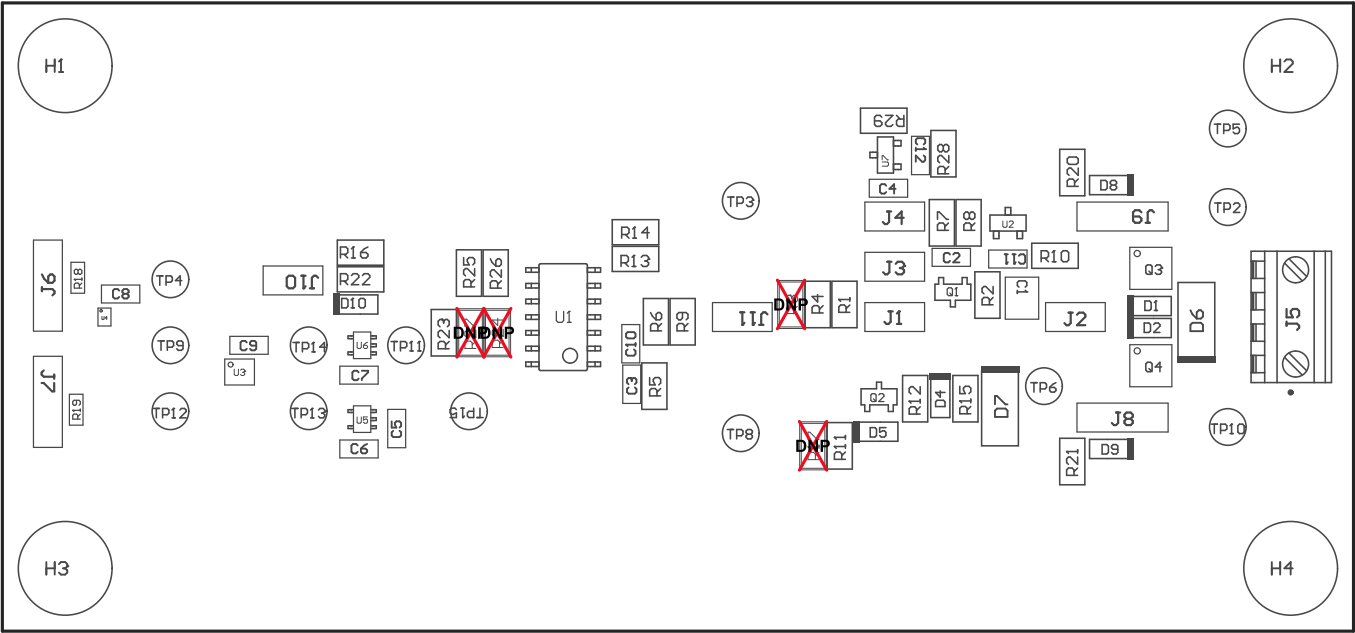
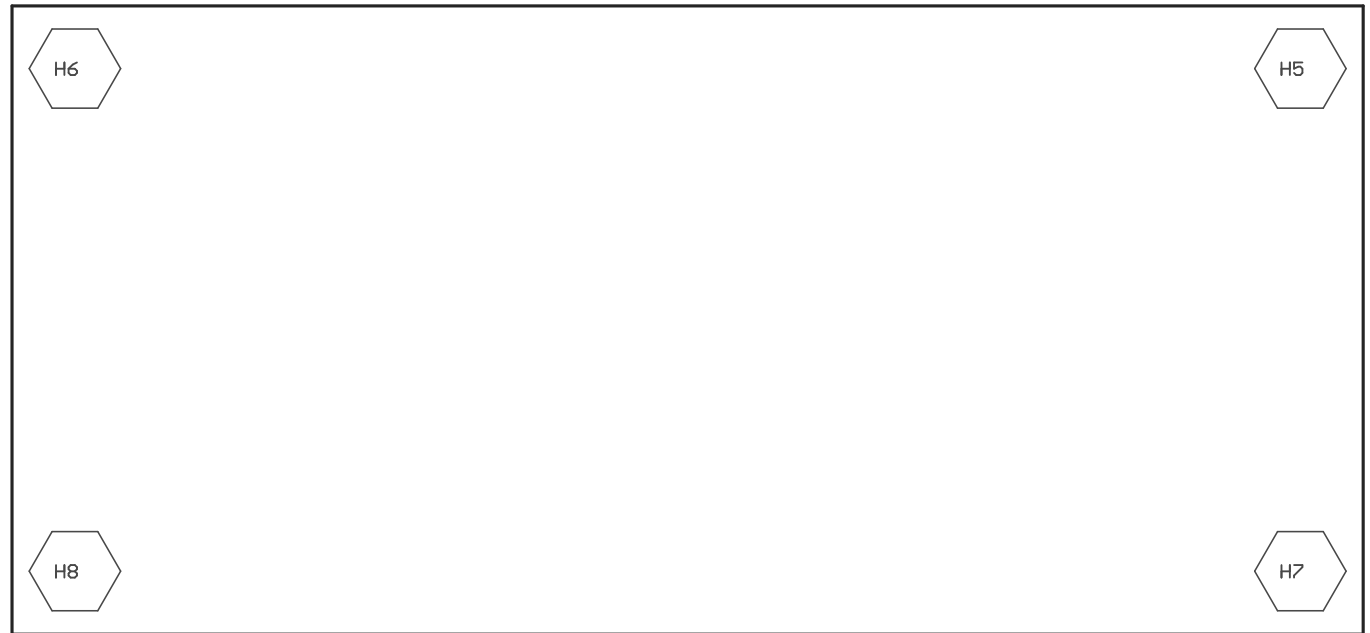


- Z21 ■ These assemblies are ESD sensitive, ESD precautions shall be observed.
- Z22 ■ These assemblies must be clean and free from flux and all contaminants. Use of no clean flux is not acceptable.
- Z23 ■ These assemblies must comply with workmanship standards IPC-A-610 Class 2, unless otherwise specified.



COMPONENTS MARKED 'DNP' SHOULD NOT BE POPULATED.  
ASSEMBLY VARIANT: 001

|                                  |                                  |                   |                                |
|----------------------------------|----------------------------------|-------------------|--------------------------------|
| PCB VIEWED FROM TOP SIDE         | BOARD #: TIDA-00377              | REV: E2           | SUN REV: Not In VersionControl |
|                                  | TID #: TIDA-00377                |                   |                                |
| PLOT NAME = Top Assembly Drawing | GENERATED : 5/30/2016 7:22:37 PM | TEXAS INSTRUMENTS |                                |



COMPONENTS MARKED 'DNP' SHOULD NOT BE POPULATED.  
ASSEMBLY VARIANT: 001

|                                     |                                  |         |                                |
|-------------------------------------|----------------------------------|---------|--------------------------------|
| PCB VIEWED FROM BOTTOM SIDE         | BOARD #: TIDA-00377              | REV: E2 | SUN REV: Not In VersionControl |
|                                     | TID #: TIDA-00377                |         |                                |
| PLOT NAME = Bottom Assembly Drawing | GENERATED : 5/30/2016 7:22:38 PM |         | TEXAS INSTRUMENTS              |